



Microsoft® Research

# Faculty Summit

10  
YEAR ANNIVERSARY

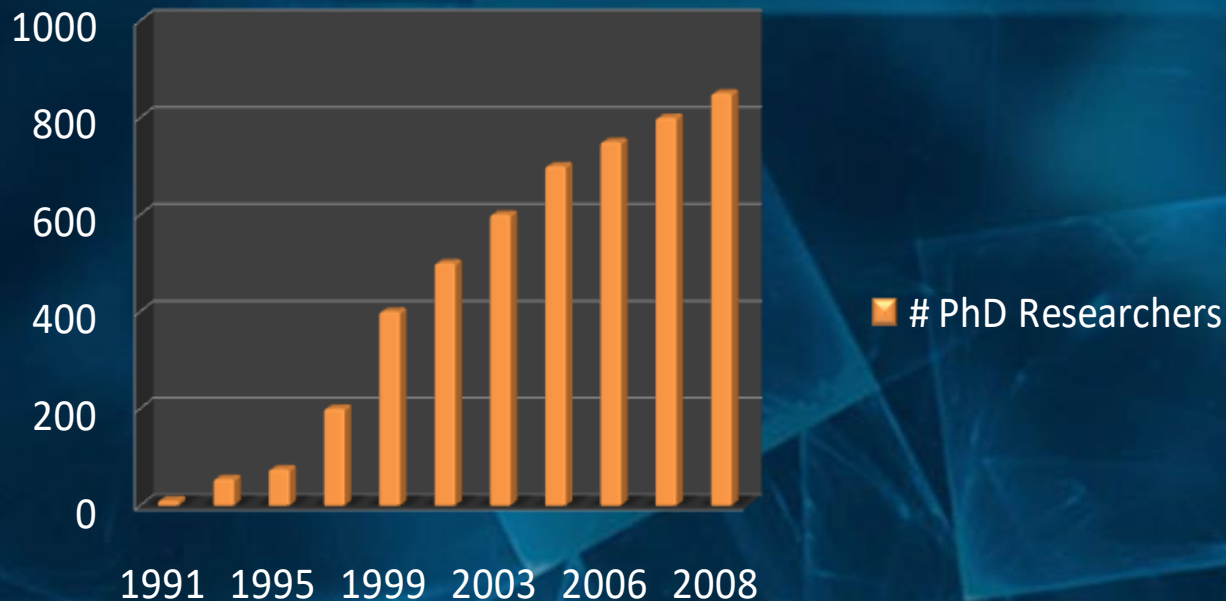
# Research in the 21<sup>st</sup> Century

Rick Rashid  
Senior Vice President  
Microsoft Research



# Microsoft Research

- Redmond, Washington (Sep, 1991)
- San Francisco, California (Jun, 1995)
- Cambridge, United Kingdom (July, 1997)
- Beijing, China (Nov, 1998)
- Silicon Valley, California (July, 2001)
- Bangalore, India (Jan, 2005)
- Cambridge, Massachusetts (July, 2008)



MSR India



Redmond



MSR Asia



MSR New England



MSR Cambridge, England



Silicon Valley, California

Microsoft®  
Research

# Microsoft Research Mission Statement

- Expand the state of the art in each of the areas in which we do research
- Rapidly transfer innovative technologies into Microsoft products
- Ensure that Microsoft products have a future



# Value of Microsoft Research to Microsoft

Microsoft  
Research

- Source of IP and new product technologies
  - Microsoft Research generates roughly 20% of the Company's patents and generally Microsoft Research patents are more "fundamental"
- Problem solving
  - Ability to bring smart people to bear rapidly on hard problems confronting products, product groups or the company
- Early warning system
  - Ears to the ground in new areas across a broad range of technologies



Microsoft Research Patent Award

# Basic Research → Agility

- Basic research group allows a company like Microsoft to respond more rapidly to change
- Research provides a reservoir of technology, expertise and people that can be quickly brought to bear:
  - New technologies
  - New competitors
  - New business models

*You invest in basic research and long-term research precisely because you don't know what the future will hold. You don't know whether there will be a war, a disease outbreak, a famine, a new competitor, or an economic dislocation of some kind.*

*Vannevar Bush*

Describing what would eventually become the National Science Foundation and the U.S. federal research infrastructure



# Inventing the Future

- Interactive Visual Media
  - Graphics and Multimedia
  - Digital Photography and Video
- Platform Elements
  - Networking, Distributed systems, Operating systems
  - Cellphone and other Devices
  - Sensor networks
  - Security, Protection against Malware
- Reinventing Software Development
  - Languages, tools, compilers
- Data and Documents
  - Data Solutions for a Terabyte World
  - Search
  - Fighting SPAM
- UI and Collaboration
  - New UI – Speech, Ink, Gesture, Natural Language
  - Meetings and Collaboration
  - Modeling of People and Groups
- Science
  - AIDS Vaccine, Quantum Computing, Astronomy
  - Algorithms, Cryptography

# Working with the Worldwide Academic Community

Microsoft  
Research

- Participate in Research Community
  - Extensive publication and conference participation
  - Professional service – DARPA, NSF, NRC
- Strong ties with universities
  - Joint research projects
- Extensive visitor and speaker program
  - Students, faculty, research scientists
  - Post-docs, sabbatical
  - Largest PhD internship program in the Industry



# Worldwide Talent Support

Microsoft®  
Research

80

students from around the world selected in 2008 for Ph.D. fellowships and scholarships

MORE THAN

**100 top Ph.D. research students** from leading European academic institutions currently supported by Microsoft Research fellowships

10

computer science students selected each year under the

GRADUATE WOMEN'S SCHOLARSHIP PROGRAM

25

Microsoft Research Faculty Fellowships awarded since 2005 in the U.S. and Canada

ABOUT

400

TOP STUDENTS

from dozens of universities participate each year in Microsoft Research Asia's Stars of Tomorrow internship program

MORE THAN  
25,000

scientists, academic researchers, faculty and students have attended Microsoft Research-sponsored summits, conferences and workshops since 2005

Microsoft Research collaborates with more than

100

top universities in North America

NEARLY

1,000

students selected annually for internships at Microsoft Research labs in the U.S., China, India and the UK

ABOUT  
100

students and young faculty attend the annual MICROSOFT RESEARCH INDIA SUMMER SCHOOL PROGRAM

1,500

attendees at Microsoft Research India's TechVista 2008 research symposium in Chennai

465

students from more than

35 countries

have interned at the Microsoft Research Cambridge (UK) lab during the past seven years

3,000

students, faculty and research scientists attended Microsoft Research Asia's

Computing in the 21st Century conferences in Beijing and Singapore

250

RESEARCHERS FROM

50

UNIVERSITIES IN

16

COUNTRIES

have joined with Microsoft Research in the Latin American and Caribbean Collaborative ICT Research Federation (LACCIR)

MORE THAN  
30

collaborative institutes and technology learning labs supported worldwide in research areas such as parallel computing, games for learning, artificial intelligence, computational and systems biology, and computational thinking

250

Ph.D. fellowships granted to students from 50 universities in the Asia-Pacific region since 1998

# *announcing*

Extending a collaborative relationship with:

National Center for Women &  
Information Technology (NCWIT)





# NCWIT and Microsoft

- NCWIT is a national coalition of over 170 prominent corporations, academic institutions, government agencies, and nonprofits
- Working to achieve and maintain U.S. global competitiveness in information technology through the encouragement and recruitment of women
- Efforts to increase women's participation in IT along the entire pipeline, from K-12 and higher education through industry, academic, and entrepreneurial careers
- [www.ncwit.org](http://www.ncwit.org)
- Second partnership with NCWIT
- Microsoft and NCWIT are collaborating to raise awareness of today's changing workforce and the positive impact that women in IT have on the industry
- Microsoft provides \$1M support over four years
- Continues relationship previously announced in 2006
- Underscores Microsoft's continued commitment to addressing critical shortages of women in the computer science talent pipeline

*announcing*

Microsoft Research New Faculty Fellowships  
2009



# 2009 Microsoft Research New Faculty Fellows

Microsoft  
Research



Rafael Pass  
*Cornell University*  
Cryptography



Svetlana Lazebnik  
*University of North Carolina,  
Chapel Hill*  
Computer Vision, Graphics,  
Visualization



Luis Ceze  
*University of Washington*  
Systems Architecture



Nicole Immorlica  
*Northwestern University*  
Theory, Economics,  
Social Computing



Gill Bejerano  
*Stanford University*  
Bioinformatics,  
Genomics

**Tuesday, July 14**  
**11:45 AM -1:00 PM**  
**Cascade**  
**Five Years of Faculty Fellowships: A Retrospective**

# "Microsoft Research Faculty Fellowships" 2010

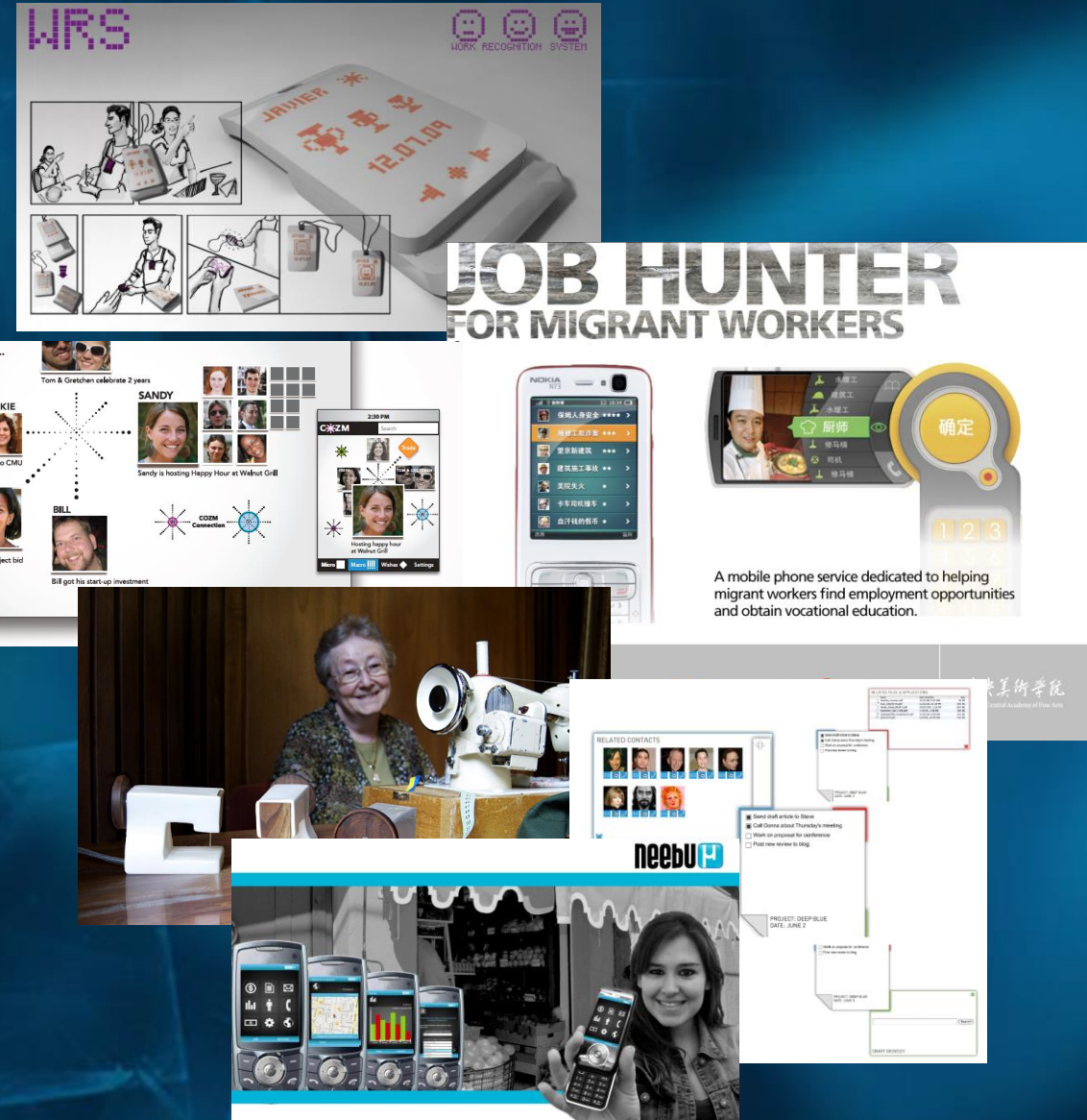
- New name: Microsoft Research Faculty Fellowships
  - Broadening the program beyond North America
    - Europe, Middle East, Africa (EMEA)
    - Latin America (LATAM)
- 2010 Fellowship Selection Process
  - Sep–Oct 2009: each institution submits *one nominee*
  - Applications vetted through 3 rounds of reviews
  - Winners announced in April 2010
  - Program information is at:  
<http://research.microsoft.com/en-us/collaboration/awards/nff.aspx>



# Design Expo - interdisciplinary student teams

Microsoft  
Research

- Tuesday, July 14
- Kodiak
- 1:00 – 3:45
- Top undergraduate & graduate design institutions showcase their projects on the topic “**New Ways of Working**”
- Carnegie Mellon, Department of Design
- Central Academy of Fine Arts, Media Lab, Beijing, China
- Art Center College of Design, Pasadena, California
- Universidad Iberoamericana, México City
- Dundee University, Scotland, UK
- New York University, Interactive Telecommunications Program
- University of Washington, Interaction Design Division





# *Example Microsoft Research Projects*



# Understanding Change on the Web

*demo*

Susan Dumais  
Principal Researcher  
Microsoft Research

# Information Dynamics

Microsoft  
Research

MSR Homepage

1996



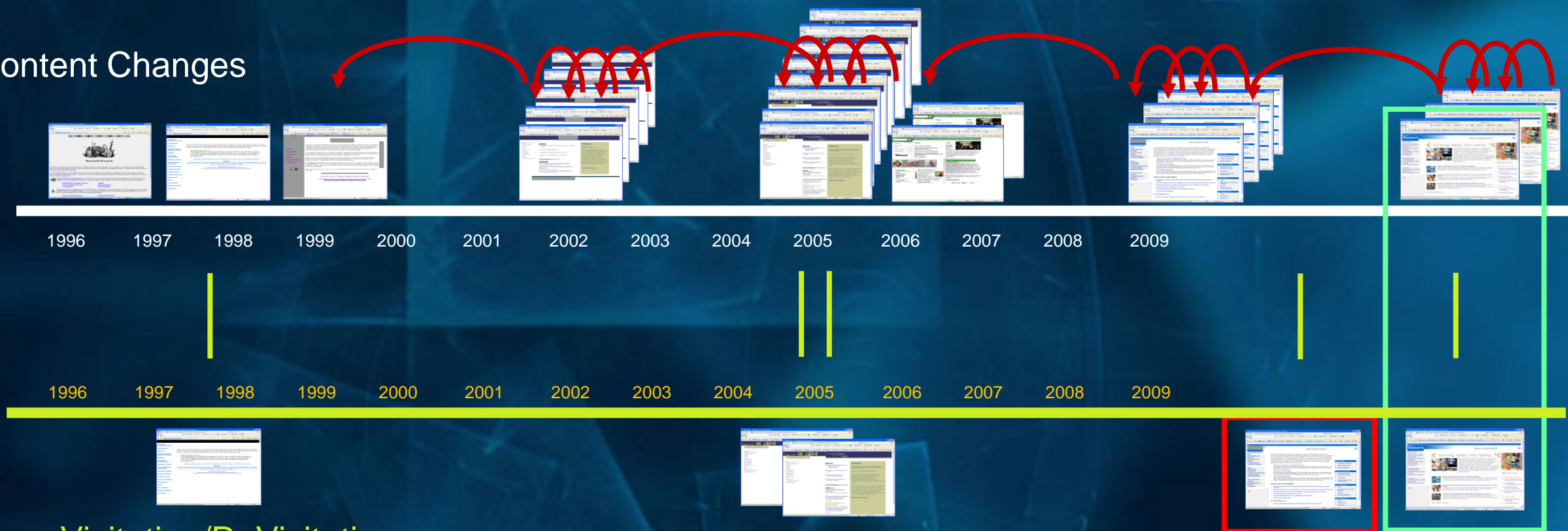
2009



# Information Dynamics

Microsoft®  
Research

## Content Changes



## User Visitation/ReVisitation

Today's Browse and Search Experiences

But, ignores ...

# What We Are Doing

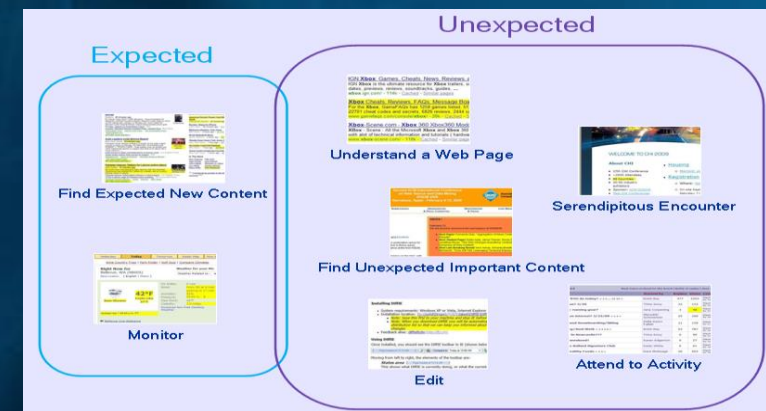
- Analyzing:
  - Content change patterns
  - User re-visitation patterns
  - Relations between change and re-visitation
- Developing:
  - Retrieval models that incorporate time
  - **Diff-IE** browser plug-in
    - Highlights what's new since you last visited
    - Changes how people view change



*demo*

# Recap

- Web information is highly dynamic
  - Yet, most tools work with a single snapshot of the information
- Understand content change, user re-visitation patterns, and their relationship
- Develop support in
  - ♦ Browsers (e.g., DiffIE viewing change, notification, presentation)
  - ♦ Search engines (e.g., crawl policy, indexing and ranking algorithms)
- More information
  - ♦ Demo #24
  - ♦ <http://research.microsoft.com/~sdumais>





# Social Desktop

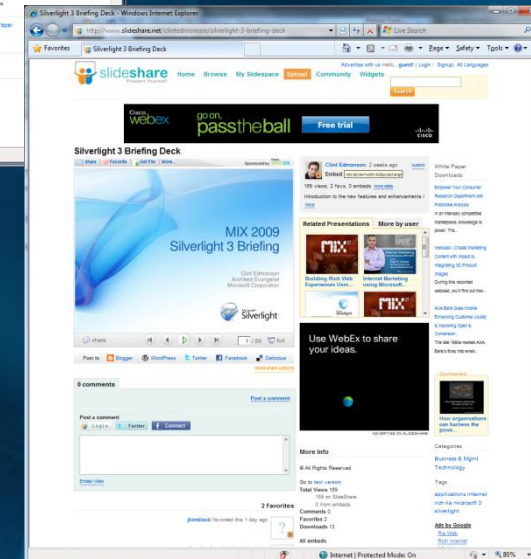
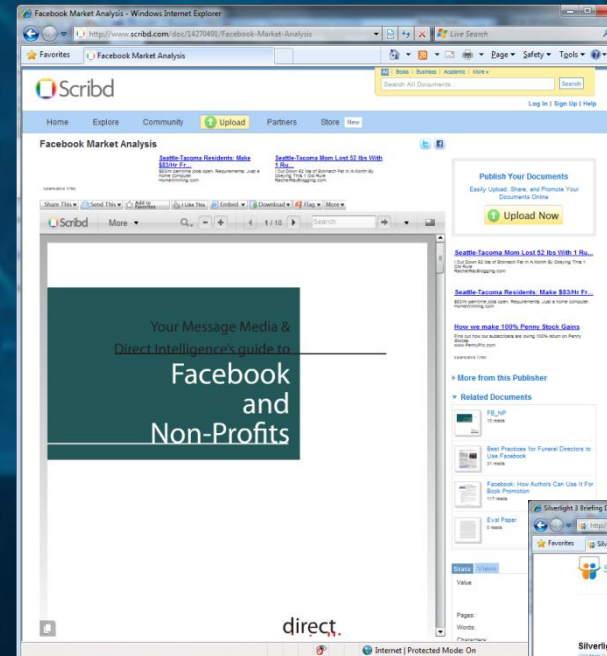
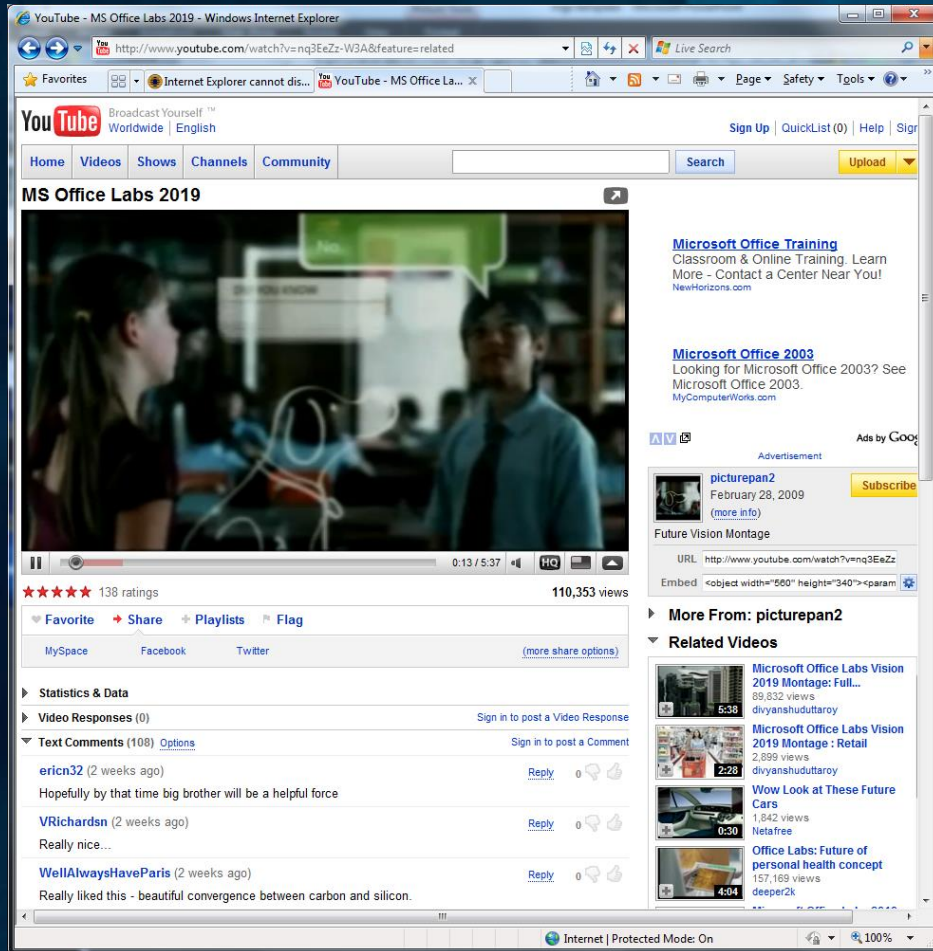
*demo*

Lili Cheng  
Director  
Microsoft Research

# Ease of Sharing & Socializing on the web...

Microsoft  
Research

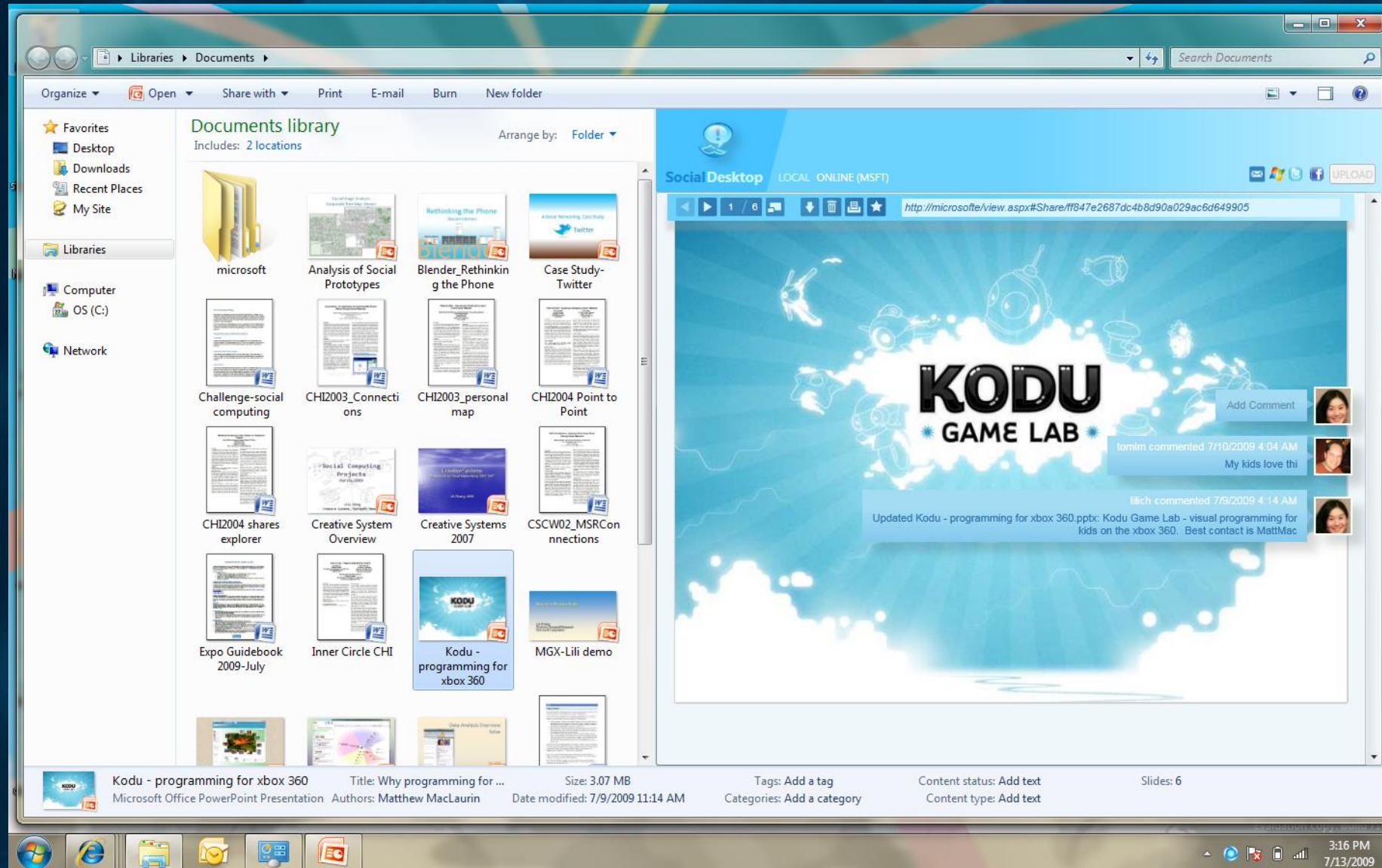
- URLs
- Rich previews
- Social context (comments, ratings, etc.)
- Public sharing





# Social Desktop

Microsoft  
Research



*demo*



# Summary

- Make sharing easy
- Unify the desktop & web
- Apply the ideas to work as well as home
- Next steps
  - Deploy to see how it's used in different settings
  - More on <http://research.microsoft.com/socialdesktop>

# Basic Research → Agility

- Basic research group allows a company like Microsoft to respond more rapidly to change
- Research provides a reservoir of technology, expertise and people that can be quickly brought to bear:
  - New technologies
  - New competitors
  - New business models

*You invest in basic research and long-term research precisely because you don't know what the future will hold. You don't know whether there will be a war, a disease outbreak, a famine, a new competitor, or an economic dislocation of some kind.*

*Vannevar Bush*

Describing what would eventually become the National Science Foundation and the U.S. federal research infrastructure



# *Questions and Discussion*

# ***Microsoft®***

© 2009 Microsoft Corporation. All rights reserved. Microsoft, Windows, Windows Vista and other product names are or may be registered trademarks and/or trademarks in the U.S. and/or other countries. The information herein is for informational purposes only and represents the current view of Microsoft Corporation as of the date of this presentation. Because Microsoft must respond to changing market conditions, it should not be interpreted to be a commitment on the part of Microsoft, and Microsoft cannot guarantee the accuracy of any information provided after the date of this presentation. MICROSOFT MAKES NO WARRANTIES, EXPRESS, IMPLIED OR STATUTORY, AS TO THE INFORMATION IN THIS PRESENTATION.